



**Regional School Unit 63**  
Clifton, Eddington, Holden

**Office of the Superintendent**  
*Sheila Caldwell*  
*Superintendent/Director of Curriculum & Instruction*

May 15, 2026

TO: Commissioner of Education  
Maine Department of Education  
23 State House Station  
Augusta, ME 04333-0023

**RE: Request for Validation of Cost Determination – RSU 63 Eddington Elementary School**

Dear Commissioner,

Pursuant to the procedures outlined for school closures in the State of Maine, the **RSU 63** is formally submitting this letter to request your validation of the determination of costs regarding the proposed closure of **Eddington Elementary School**.

In accordance with the requirements for an official submission, we have enclosed the following documentation for your review:

- **Lack of Need Report:** Prepared pursuant to **20-A MRS Section 4102 sub-section 3**.
- **Cost Analysis Summary Sheet:** Data matching the subtotals and grand totals of the Expenditure Detail Report.
- **Cost Analysis Expenditure Detail Report:** Utilizing the Maine Education Financial System (MEFS) "Budget to Actual Report" for the Base Year, detailing district expenditures, school-specific costs, continuing expenditures, and projected savings.

On this same date, copies of these reports and the required statutory references have been provided to the Town Office of **Eddington, Maine** and the Town Office(s) of **Clifton, Maine and Holden, Maine**.

We understand that the 10-day municipal comment period begins today, and we look forward to your response within the statutory timeline following the conclusion of that period.

Thank you for your time and assistance in this matter.

Sincerely,

Sheila Caldwell  
Superintendent of Schools, RSU 63

# Maine Department of Education

## COVER SHEET FOR MUNICIPALITY COMMENTS

### REGARDING A SCHOOL CLOSURE UNDER 20-A MRSA SECTIONS 4102 and 1512

Name of Municipality Submitting  
Comments:

---

Name of School:

---

Regional School Unit, School  
Administrative District, or Community  
School District:

---

**Please send comments to:**

**[charlotte.ellis@maine.gov](mailto:charlotte.ellis@maine.gov)**

**or**

**Charlotte Ellis, School Finance Helpdesk Analyst  
Department of Education  
23 State House Station  
Augusta, ME 04333-0023**

**Chapter 26: RULES RELATING TO REORGANIZATION OF SCHOOL  
ADMINISTRATIVE DISTRICTS.**

**SUMMARY:** These rules specify the types of data to be used in determining school closing issues and identify responsibilities for implementing 20-A MRSA 1512.

If the member municipality wishes to comment on the compliance of the cost data in paragraph B with Title 20-A MRSA § 1512 and these rules, then it must deliver written comments to the Department within 10 days of receipt of the cost data from the RSU.

**§1512. Closing school**

**1. Vote; cost of election.** A school in a member municipality of a regional school unit may not be closed unless the voters in the member municipality vote on the article in accordance with the referendum procedure set forth in this chapter.

"Article: Do you favor authorizing the board of directors of (name of regional school unit) to close  
..... (name of school)?

Yes No

The additional cost of keeping the school open has been estimated by the regional school unit board to be \$ ....."

The election must be conducted within that member municipality only, pursuant to department rule, and the costs of the election are borne by the regional school unit.

[PL 2007, c. 240, Pt. XXXX, §13 (NEW).]

**2. Expense of keeping the school open.** If the voters vote by a majority vote to keep the school open, the member municipality is liable for some additional expense for actual local operating costs and transportation operating costs as defined in section 15672. The determination of costs is subject to the approval of the commissioner. The cost to be borne by the municipality voting to keep a school open is the amount that would be saved if the school were closed. Any additional costs that must be borne by the member municipality must be part of the article presented to the voters at the meeting to determine whether the school should remain open.

[PL 2007, c. 240, Pt. XXXX, §13 (NEW).]

**3. Costs and procedures during subsequent years.** During any year subsequent to the year during which a school remains open contrary to the regional school unit board's vote to close that school as a result of a municipal referendum, the school will be open without any additional cost to the municipality except as described in paragraphs A and B.

A. If the regional school unit board again votes to close the school and the voters of the member municipality again vote to keep the school open, as described in this subsection, then the school will remain open and the member municipality will be obligated to pay the additional costs as described in subsection 2. [PL 2007, c. 240, Pt. XXXX, §13 (NEW).]

B. If the regional school unit board again votes to close the school and the voters of the member municipality fail to vote to keep the school open, then the school is closed. In this event, the school may be reopened only if the regional school unit board votes to reopen the school. [PL 2007, c. 240, Pt. XXXX, §13 (NEW).]

[PL 2007, c. 240, Pt. XXXX, §13 (NEW).]

**4. Definition of school closing.** For purposes of this section, a school closing is any action by the regional school unit board that has the effect of providing no instruction for any students at that school. [PL 2007, c. 240, Pt. XXXX, §13 (NEW).]

**5. Method of payment by liable municipality.** If a municipality is liable for additional expenses as determined in subsection 3, paragraph A, then the amount of this additional expense must be subtracted from the regional school unit budget before each member municipality's assessment is computed. This additional expense must be paid by the member municipality that is liable in equal monthly amounts, unless the regional school unit and that member municipality mutually agree to another method of payment.

[PL 2007, c. 240, Pt. XXXX, §13 (NEW).]

**6. Multiple municipalities.** If a school proposed for closure is a school that serves students from more than one municipality, the article set forth in subsection 1 must be submitted to the voters in each of the municipalities that sent all students from that municipality to the school. If a majority of the

voters in each of the municipalities vote to keep the school open, the school is not closed and the municipalities share in the costs under this section in the same proportion as they share the current operating costs of the school.

[PL 2009, c. 213, Pt. OOOO, §1 (AMD).]

#### SECTION HISTORY

PL 2007, c. 240, Pt. XXXX, §13 (NEW). PL 2007, c. 668, §25 (AMD). PL 2009, c. 213, Pt. OOOO, §1 (AMD).

The State of Maine claims a copyright in its codified statutes. If you intend to republish this material, we require that you include the following disclaimer in your publication:

*All copyrights and other rights to statutory text are reserved by the State of Maine. The text included in this publication reflects changes made through the First Special Session of the 132nd Maine Legislature and is current through October 1, 2025. The text is subject to change without notice. It is a version that has not been officially certified by the Secretary of State. Refer to the Maine Revised Statutes Annotated and supplements for certified text.*

The Office of the Revisor of Statutes also requests that you send us one copy of any statutory publication you may produce. Our goal is not to restrict publishing activity, but to keep track of who is publishing what, to identify any needless duplication and to preserve the State's copyright rights.

PLEASE NOTE: The Revisor's Office cannot perform research for or provide legal advice or interpretation of Maine law to the public. If you need legal assistance, please contact a qualified attorney.

RSU63 /MSAD63 with Eddington School - Cost Center 120 Closing

COST ANALYSIS SUMMARY

	(A)	(B)	(C)	(D)	Number of Staff positions reduced (please indicate each type of position)	Supporting Data
Operating Costs	Actual Expenditures for this District 2024- 2025	Actual Expenditures for this School only in 2024- 2025	Expenditures that will continue even if this School is closed in 2024- 2025	Col (B) minus Col (C) Savings if this School is closed in 2024-2025		
Student and Staff Support (Guidance, Health, Instructional Technology, Improve Instruction, Library Services & Student Assessment)	\$ 652,798.83	\$ 91,544.27	\$ 40,257.26	\$ 51,287.01	a .5 ed tech for library aide; a stipend for assistant to principal.	Savings here reflects a stipend to the teacher who is the "assistant to the
System Administration (Board, Superintendent, Business Office)	\$ 495,146.14	\$ -	\$ -	\$ -		No savings
School Administration (Principal, Secretary)	\$ 453,586.90	\$ 160,366.76	\$ -	\$ 160,366.76	Assistant Principal position - eliminated Salaries & Benefits - 1.0 FTE Administrative Assistant Position - eliminated Salaries & Benefits - 1.0 FTE Professional Dev AdAsst eliminated	Appendix B. We would eliminate one assistant principal position and the school secretary which demonstrates a savings of \$160,366.76 We will save on
School Facilities (Op & Maint)	\$ 1,575,469.14	\$ 205,579.92	\$ -	\$ 205,579.92	2.0 FTE Custodians day and night - eliminated	maintenance staff, the day and the night custodial as well as supplies and

Transportation	\$ 577,664.36	\$ 21,742.00	\$ -	\$ 21,742.00			The savings to transportation will be mainly to the fuel costs associated with
All Other Expenses (School Lunch, Transfers)	\$ 297,955.26	\$ 148,310.05	\$ 101,760.40	\$ 46,549.65	1.0 FTE Kitchen Manager and .5 FTE Kitchen Worker - eliminated		With the closing of the school, we will not need the kitchen staff who work there. Each of our other
Debt Service	\$ 175,504.05	\$ -	\$ -	\$ -			Each of our other

School Administrative Unit

Regular Instruction (Elementary & Secondary)	\$ 5,986,364.07	\$ 796,280.82	\$ 624,852.15	\$ 171,428.67	2 FT teachers with benefits		Appendix E With the school closing we will eliminate 2 full time general education teachers at an average of \$58,850 and their benefits. Also, we'd cut expenses with
Special Education (Resources, Self-contained)	\$ 1,559,021.80	\$ 193,010.61	\$ 193,010.61	\$ -			No savings associated with school closure and special education costs.
Other Instruction (Co- / Extra-Curricular)	\$ 97,939.35	\$ 12,996.01	\$ -	\$ 12,996.01			This slight savings reflects the ML staff no longer needed at Eddington School.
<b>Totals:</b>	<b>\$ 11,871,429.90</b>	<b>\$ 1,629,830.44</b>	<b>\$ 959,880.42</b>	<b>\$ 669,950.02</b>			
<b>Less: Isolated Small School Adjustment(s):</b>							

Calculation of the costs to be incurred by member municipality									
for keeping the school open:							669,950.02		
Cost to Member Municipality:							669,950.02		

The School Administrative District must provide the amount and nature, or each type of source data that is used in these calculations and the basis for each pro-rating that is performed, in sufficient detail to permit an independent verification of accuracy of the cost data and its validity for use with 20-A MRSA, Section 1407 and rules.

Appendix A = XXX; Appendix B = XXX; Appendix C = XXX; Appendix D = XXX; Appendix E = XXX; Appendix F = XXX

Date: May 12, 2026  
To: Maine Department of Education  
From: The governing body of the administrative unit of RSU63

RE: Lack of Need and Proposed Closure of the Eddington Elementary School

**Executive Summary**

The Eddington Elementary School has been deemed unnecessary due to declining enrollment in the district and unprofitable to maintain for the district by the governing body of the administrative unit of RSU63.

This report outlines the projected lack of need for the current educational services offered by the RSU63, a PreK-8 school district, leading to the proposed closure of the Eddington Elementary School building on July 1, 2027. It includes an analysis of projected student enrollment over the next five years, educational programming, transportation services, and the future disposition of the building, among other information on the topic.

**Current Enrollment by School:**

Eddington Elementary	Prek-1	99
Holden Elementary	2-4	155
Holbrook Middle	5-8	170

*\*slightly lower than the October count*

**A. PROJECTION OF THE NUMBER OF STUDENTS IN THE AFFECTED AREA OVER THE NEXT 5 SCHOOL YEARS, INCLUDING A PROJECTION OF THE EDUCATIONAL PROGRAMS WHICH THEY WILL NEED; [PL 1983, C. 422, §17 (NEW).]**

The gradual decline in enrollment reflects demographic trends within the district, indicating a diminishing student population that does not support the operational costs of maintaining three schools.

Below is the projected and actual enrollment districtwide over the past 5 years as well as projections for the next 5 years.

**Student Enrollment and Future Projections**

Past Years	Projected	Actuals
2020-2021	489	445
2021-2022	487	430
2022-2023	483	450
2023-2024	485	436
2024-2025	484	440
2025-2026	482	428

**Projections based on state 1% average decline and district's 2.75% average decline**

	<b>1% decline</b>	<b>2.75% decline</b>
2026-2027	424	416
2027-2028	420	405
2028-2029	416	393
2029-2030	412	383
2030-2031	408	372

The two remaining schools: Holden Elementary and Holbrook Middle, will shift the grades they serve and take on additional grade levels. Holden will be PreK-2 and Holbrook, grades 3-8. We have the space and the resources to accommodate all classrooms and services within the two buildings, with additional space should we need it. (See Appendix A, Grade Level Assignments)

**B. MANNER IN WHICH THE CONTINUATION OF THE EDUCATIONAL PROGRAMS FOR THE AFFECTED STUDENTS WILL BE PROVIDED; [PL 1983, C. 422, §17 (NEW).]**

**Educational Programming Needs**

**Primary Educational Programs**

Grades K-8: Core subjects (Math, Science, English Language Arts, Social Studies) and Specials (Art, Music, Library, Guidance, and Physical Education)

As the student populations continues to decline, the programming to meet the needs of all learners adjusts as necessary while maintaining adherence to the Maine Learning Results (MLR) in English Language Arts, Health Education, Mathematics, Physical Education, Science, and Social Studies, and Specials

Our PreK and K students explore concepts through hands-on activities with opportunities to explore and interact with learning materials. Our teachers are beginning to align to the Play Lab model through the Maine Department of Education (DOE) focusing on play-based strategies.

We use the HMH Into Reading, K-6 and HMH Into Literature for ELA across the district, providing a clear scope and sequence and pacing for all instruction from basic literacy skills to in depth reading strategies for comprehension and analytical learning skills.

IReady is our district's K-8 math program and students are able to access assignments, learning games, and practice time based on their diagnostic level. This data informs instruction and allows teachers to target instruction to learner need.

Our science program at the middle school is through the University of Maine's RISE program and keeps students learning with enthusiasm with interactive and challenging lessons.

Our social studies program uses a variety of materials and resources including Scholastic Magazine and IXL. Students learn about civics, government, geography and explore events from history to better understand their community and the world they live in.

We have a robust specials program with art, music, physical education, library and guidance, all of which will continue more efficiently and effectively when we consolidate to two schools. This will allow for better utilization of staff and resources to best provide this important learning aspects to all students.

We incorporate technology into academic programs and instruction with an approach to guide students safely and age appropriately, to empower all students to foster an understanding technology and digital platforms within their learning path.

**C. EFFECTIVE DATE ON WHICH THE CLOSING WILL TAKE PLACE; [PL 1983, C. 422, §17 (NEW).]**

We are proposing to close the Eddington Elementary School July 1, 2027.

**D. PROJECTION OF ADDITIONAL TRANSPORTATION OR OTHER RELATED SERVICES; [PL 1983, C 422, §17 (NEW).]**

**Transportation Impact Summary with Eddington School Closure**

**Current System (All 3 Schools Open)**

- Total Routes: 14
- Annual Mileage: 2,015 miles/week equivalent system load
- Weekly Fuel Cost Estimate: \$1,376
- Annual Fuel Cost Estimate: \$79,607

**With Eddington School Closed**

**1. Route Reduction**

Routes Reduced: 14 → 12 routes

- = 1 High School route PM only
- = 1 Elementary route Both AM and PM

14% reduction in total routes

## 2. Mileage Reduction

- System Mileage: 2,015 → 1,653
- Reduction: 362 miles

18% reduction in total system mileage

## 3. Fuel Cost Savings

- Weekly Fuel Cost: \$1,376 → \$972
- Weekly Savings: \$404
- Annual Fuel Cost: \$79,607 → \$57,865
- Annual Savings: \$21,742

27% reduction in fuel costs

## 4. Student Ride Time (Minutes per Trip)

Examples from route analysis:

- Bus A (AM): 62 → 62 minutes (no increase)
- Bus B (AM): 63 → 63 minutes (stable)
- Bus L (PM): 70 → 60 minutes (Drop)
- Bus R (PM): 55 → 45 minutes (Drop)

No increases in ride time, and routes remain within ~45-to-64-minute range

## 5. Capacity & Efficiency

- Total Students Transported: ~263 students
- System Capacity: 822 seats
- Utilization Rate: 31%

## Operational Impact (By the Numbers)

- 2 routes eliminated
- 362 fewer miles driven
- \$21,742 annual fuel savings
- 0 increase in ride times

Closing Eddington School results to transportation:

- Fewer buses on the road
- Lower costs
- Efficient use of existing capacity
- Stable student ride times

### **Support Services for Students with IEPs**

As part of the proposed closure of the Eddington School, the district has carefully considered the impact on all students, including those eligible for special education services. RSU 63 is committed to ensuring continuity of services and full access to a free and appropriate public education (FAPE) for every student.

All students with IEPs will continue to receive services in alignment with their individualized plans, including specially designed instruction, related services, and accommodations. Placement decisions will remain student-centered and based on the Least Restrictive Environment (LRE), ensuring that each student's needs are met in an appropriate and supportive setting.

The district has reviewed current programming, staffing, and resources to ensure that receiving schools are equipped to implement IEPs with fidelity. Special education staff will be strategically assigned to maintain consistency and support smooth transitions for students. Collaboration between general and special education staff will continue to be a priority to support inclusive practices and positive student outcomes.

In preparation for this transition, the district will communicate proactively with families, provide opportunities for team meetings as needed, and ensure that all records and services transfer seamlessly. RSU 63 remains committed to meeting all state and federal requirements and to supporting the academic, social, and emotional needs of every student throughout this process.

### **E. EXISTENCE OF ANY OTHER OUTSTANDING FINANCIAL COMMITMENTS, INCLUDING DEBT SERVICE, RELATED TO THE SCHOOL BUILDING ALONG WITH A RETIREMENT SCHEDULE OF PAYMENTS TO MEET THE COMMITMENTS; [PL 1983, C. 422, §17 (NEW).]**

RSU 63 acquired the Eddington Elementary School building as part of its commitment to providing quality education to the community. The history of this acquisition is tied closely to the evolution of educational needs in the region. Eddington Elementary School was originally established to serve the local population. Over the years, as the community grew, the school underwent expansions and renovations to accommodate more students.

In the early 2000s, there was a trend in Maine towards school consolidation to improve efficiency and resource allocation. This led to the formation of RSU63, which combined several smaller school districts. RSU63 acquired the Eddington Elementary School building around the time of the RSU's establishment in 2009, following the state's consolidation efforts. After acquiring the building, RSU63 invested in renovations to modernize the infrastructure and make it more conducive to learning, ensuring that it met current educational standards.

The only outstanding loan on the building is the following loan from the DOE and Maine Municipal Bond Bank School Revolving Renovation (SRRF) loan program:

**Loan Purpose:** Health, Safety and Compliance Repairs (IAQ) to Eddington School (up to \$796,500), Holbrook School (up to \$1,000,000), and Holden School (up to \$876,750)

**Issue Date:** December 30, 2020.

**Loan Obligation:** the loan is a zero interest loan with substantial forgiveness of principal under the SRRF program.

**Original Principal:** \$2,673,250.00 with \$1,304,278.00 forgiven, Net principal payable \$1,368,972

**Allonge:** According to the Maine Bond Bank, the allonge was completed 2/22/2024. The allonge reflects the portion of the original note advanced for renovations. According to the Maine Bond Bank, the allonge adjusted the total amount borrowed to \$2,649,724.58, including forgiveness of \$1,292,800.62, and thus a net principal payable of \$1,356,923.96.

**Current principal payable as of 5/4/2026:** \$675,880.26 (per Maine Bond Bank).

**Retirement Date:** 11/1/2030

**Portion of Original Principal allocable to Eddington**

**School:**  $\$796,500/\$2,673,250 = 29.8\%$  (based on DOE Eligibility Certificates)

**Original Principal allocable to Eddington School:**  $\$1,368,972 \times 29.8\% = \$407,954$

**Allonge Net Principal allocable to Eddington School:**  $\$1,356,923.96 \times 29.8\% = \$404,363.34$

**Current principal payable that is allocable to Eddington School:**

$\$675,880.26 \times 29.8\% = \$201,412.32.$

Our legal counsel, Drummond Woodsum, has advised that because SRRF bonds are not issued as tax exempt bonds, there is no private activity bond or arbitrage regulations implicated if the financed building renovations become privately owned. Accordingly, the building may be transferred in accordance with state law.

Upon closure, the school board has no proposed further use of the building. The current intention of the school board is to promptly offer the building "as is" to the Town of Eddington. Pursuant to section 4103(3)(A), if the town accepts the building, the town must be liable for the 29.8% portion of the then outstanding debt allocable to the Eddington School (currently \$201,412.32). If the town does not accept the building, the board's intention will be to promptly sell the building on the open market in accordance with section 4103(4).

#### **F. PROPOSED DISPOSITION OF THE SCHOOL BUILDING; [PL 1983, C. 422, §17 (NEW).]**

The Board will follow the required process regarding the future of the building. If there is interest, the school may donate the building back to the town for community use, such as recreational or community services.

We would also extend right of first refusal to any area charter school that may benefit from the use of the building.

If there is not an interest from the town or a charter school to acquire the building, we will consider the sale of the property. The school building will be assessed for market value and listed for sale.

#### **G. FINANCIAL IMPACT OF CLOSING THE SCHOOL BUILDING; AND [PL 1983, C. 422, §17 (NEW).]**

This closure will be a great strategic financial decision for RSU63, driven by declining student enrollment and aimed at aligning district resources with current and future district demand. The closure decision aims to strengthen the district's financial position while maintaining and enhancing the quality of education provided to our students.

From a financial standpoint, the closure will generate recurring cost savings. And the district is projected to save approximately \$670,000 annually by eliminating some cost avenues: such as facility-related expenses, including maintenance, custodial, and some administrative overhead. Additional savings will be realized through transportation efficiencies, such as bus routes, fuel consumption, and operational times, which will be significantly optimized.

Finally, the Eddington school closure represents a fiscally reasonable solution. It reduces unnecessary expenses, improves operational efficiency and productivity, and allows RSU 63 to better understand and redirect resources towards enhancing academic and educational outcomes. By taking this proactive step, the district ensures long-term financial sustainability while continuing to prioritize the success and well-being of its students.

#### **H. STATEMENT OF REASONS WHY THE SCHOOL BUILDING IS BEING CLOSED. [PL 1983, C. 422,**

##### **Rationale for Closure**

The school has been deemed unnecessary and financially unfeasible given the current district enrollment and the trend in declining enrollment over the past decade. Maintaining the building incurs significant costs that cannot be justified with the declining student population, and the associated funds would be better spent on direct student learning.

##### **Conclusion**

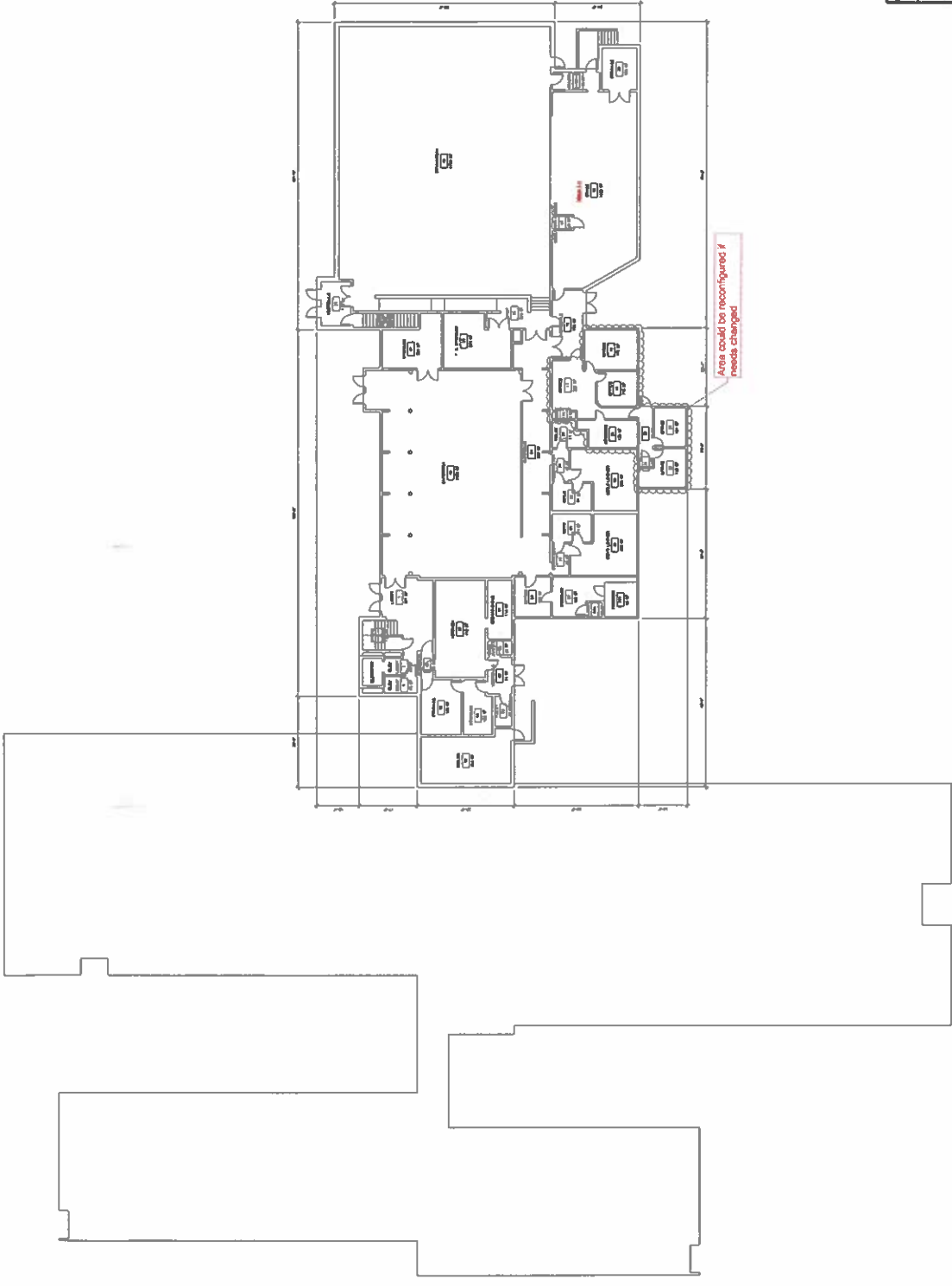
The proposed closure of the RSU 63 school building is a necessary step to align educational services with community needs and fiscal responsibility. With the projected

decline in student enrollment, it is imperative to take action to ensure that resources are allocated effectively and that RSU63 can continue to provide academic excellence to students across the district. The closing of the Eddington School will ensure that we do not have to cut programs and services that are proven effective to students. The report outlines the necessary steps and considerations in closing the building while continuing to provide quality education to all students.

We appreciate your consideration of this report and look forward to your guidance on the next steps.



# Appendix A



BUILDING PROJECT REVIEW	
<b>HALEY WARD</b>	
City of Vancouver Public Works 1000 Burrard Street V6J 4G1	
FOURBLOCK BRIDGE SCHOOL 1000 Burrard Street	
EXISTING FLOOR PLAN LOWER LEVEL	
DATE	10/11/11
BY	ALAN WARD
SCALE	AS SHOWN
A101	

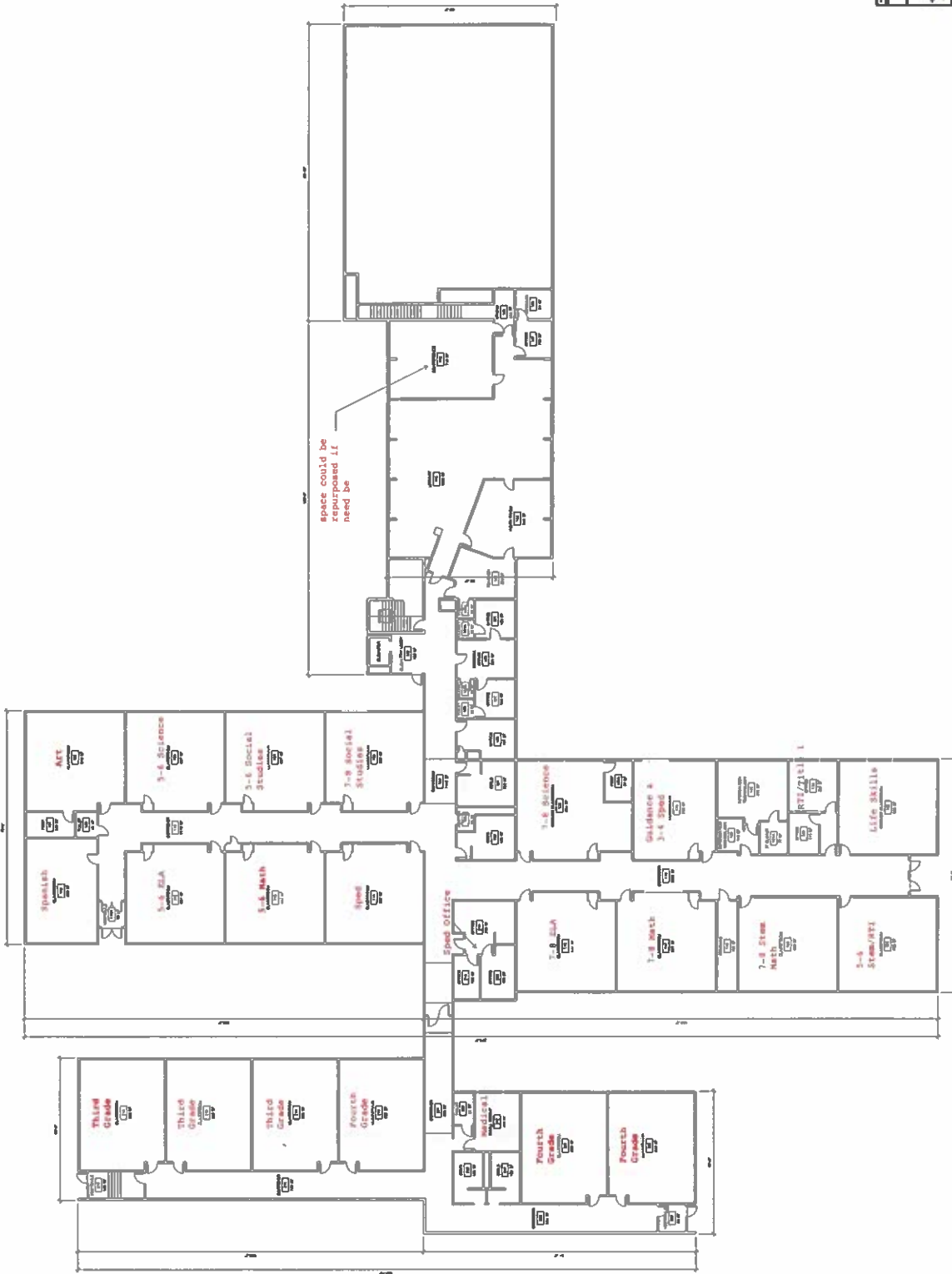
EXISTING FLOOR PLAN LOWER LEVEL  
10/11/11 ALAN WARD ARCHITECTURE CONSULTANTS INC. 10/11/11



# Appendix A

NOTE: This markup represents one possible layout scenario. It is not intended to be prescriptive, rather to show the possible rooms required.

Key Points:  
1) This includes Grades 3-5 would be in notebook  
2) No speciality require extra.



**HALEY WARD**  
 HALEY WARD  
 1000 North Main Street  
 Portland, ME 04108  
 2023.08.01

HOLLISWOOD MIDDLE SCHOOL  
 1000 North Main Street  
 Portland, ME 04108  
 2023.08.01

3RD FLOOR PLAN UPPER LEVEL  
 1000 North Main Street  
 Portland, ME 04108  
 2023.08.01

A102

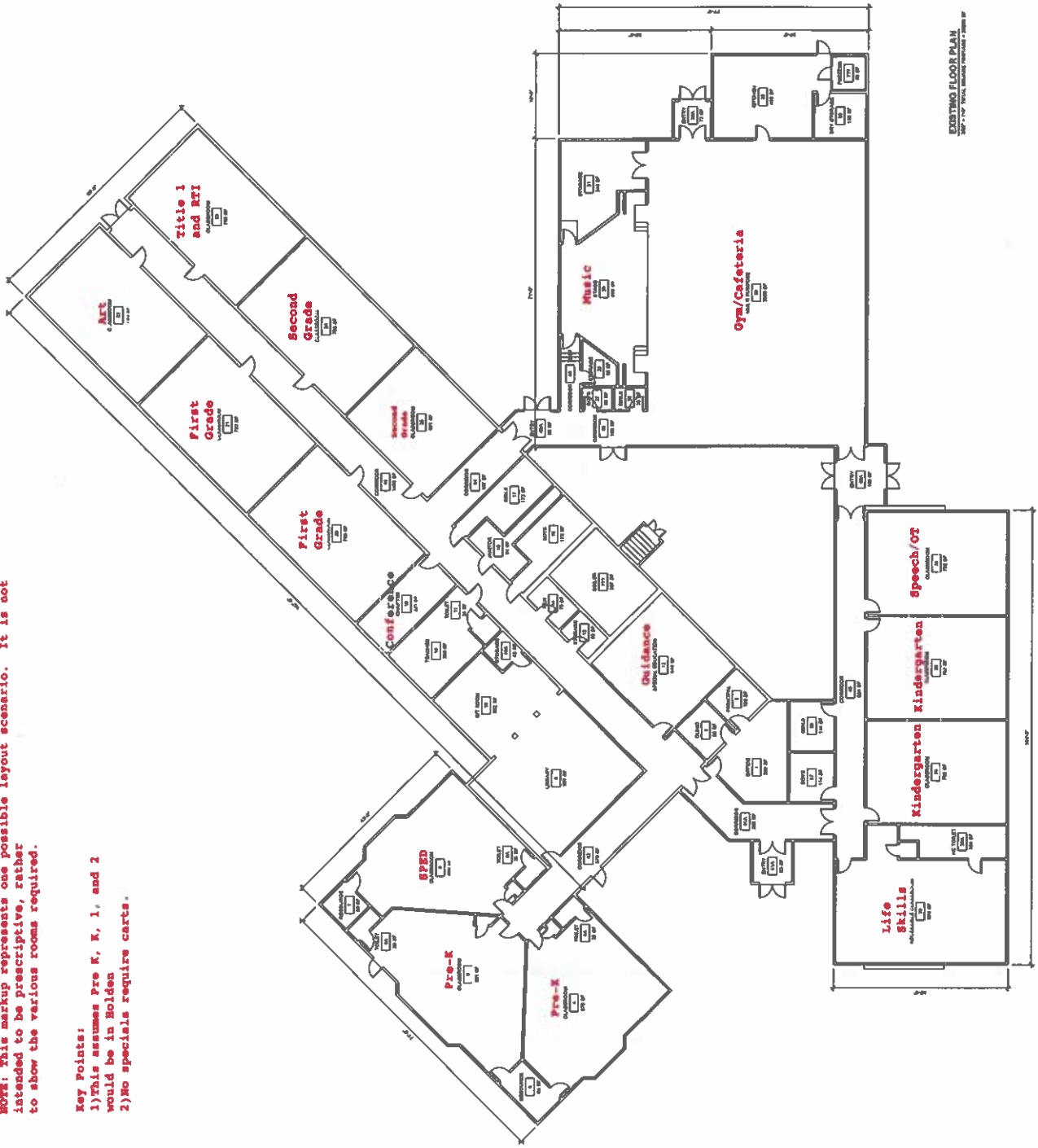
3RD FLOOR PLAN UPPER LEVEL

# Appendix A

**NOTE:** This markup represents one possible layout scenario. It is not intended to be prescriptive, rather to show the various rooms required.

**Key Points:**

- 1) This assumes Pre K, K, 1, and 2 would be in Holden
- 2) No specials require carts.



EXISTING FLOOR PLAN  
200' x 100' TOTAL, EXCLUDING TERRACE & DRIVE

ISSUED FOR REVIEW	
<b>HALEY WARD</b> INCORPORATING   ENVIRONMENTAL   SUSTAINING <small>One Massachusetts Plaza, Suite 200          North Andover, MA 01857          Phone: 978-875-2000          Fax: 978-875-2001</small>	
<b>HOLDEN ELEMENTARY SCHOOL</b> HOLDEN, MASS.	
EXISTING FLOOR PLAN	
DATE: 01/20/10 DRAWN BY: [blank] CHECKED BY: [blank] SCALE: [blank]	<b>A101</b>